

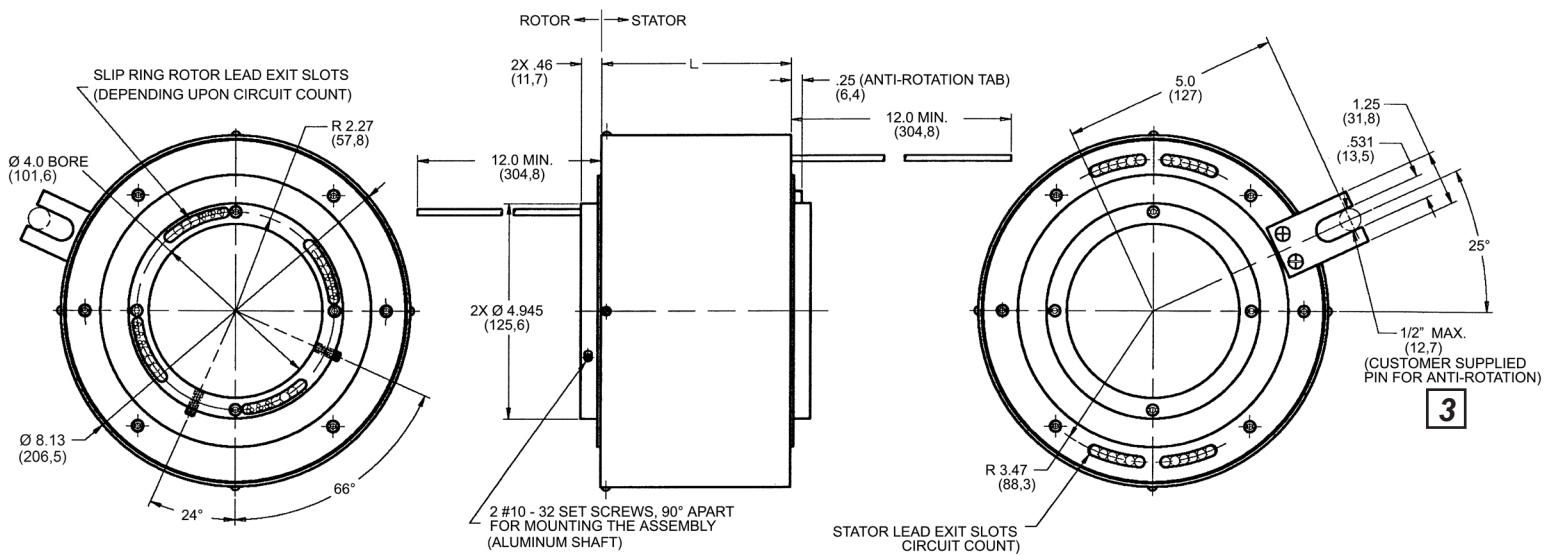
INSTALLATION GUIDE

AC6098 Commercial Slip Ring Assembly Proper Use and Mounting Instructions

Shaft mounted units:

1. Position the slip ring in the desired location and tighten both set screws, equally, (10-32 x .625 supplied) to the shaft. Maximum torque 50-60 lb-in (DO NOT OVER TORQUE)
2. Route the wiring and make the necessary connections. Do not allow the wiring to restrict free rotation of the stator inside of the slip ring.
3. Position a 1/2" (max. dia.) screw or dowel (NOT SUPPLIED) in the anti-rotation tab to the 5.0" dimension as shown.

CAUTION: Because of possible geometric mismatching between the customer's application and the slip ring, "hard mounting" of both ends of the slip ring (i.e., securing the rotor and stator such that there is NO floating of the stator anti rotation tab during operation) is not recommended and may cause premature failure.



* Dimensions are in inches (millimeters)

Part #	# of Circuits	Capsule Length (L)	# of Modules
AC6098-6	6 power ckts max or 18 signal ckts max	4.6" (111,8 millimeters)	1 to 6
AC6098-12	12 power ckts max or 36 signal ckts max	7.7" (195,6)	7 to 12
AC6098-18	18 power ckts max or 54 signal ckts max	11.1" (282,0)	13 to 18
AC6098-24	24 power ckts max or 72 signal ckts max	14.4" (365,8)	19 to 24

Specifications and information are subject to change without prior notice.
© 2008 Moog Inc. MS2088 5/08

MOOG
COMPONENTS GROUP

800/336-2112 • 540/552-3011 • FAX 540/557-6400 • 1213 North Main Street Blacksburg, VA 24060

www.moog.com/components • email: mcg@moog.com